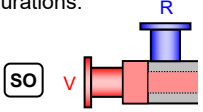
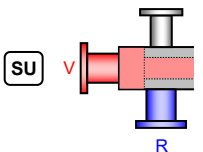
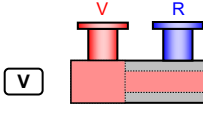


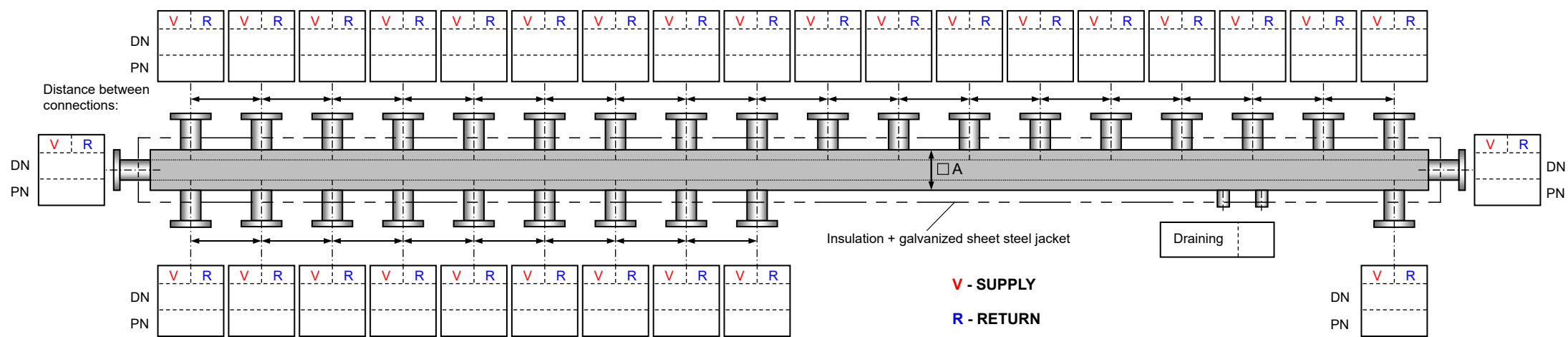
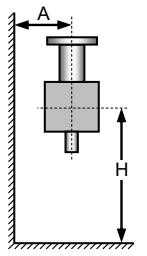


Enquiry/order form: Combined supply and return manifold HV

Manifold size A	Manifold connections size	Max. manifold connections size	Flow rate	Output at $\Delta t=20^{\circ}\text{C}$	Maximum manifold connections are possible in the following configurations:	Manifold length <input type="text"/> mm
<input type="checkbox"/> 60	DN32	DN40	3,3 m ³ /h	75 kW		Max. operating pressure excess <input type="text"/> bar
<input type="checkbox"/> 80	DN40	DN50	5,3 - 7,3 m ³ /h	120 - 165 kW		Max. temperature <input type="text"/> °C
<input type="checkbox"/> 100	DN50	DN65	8,5 - 11 m ³ /h	190 - 245 kW		Insulation choice:
<input type="checkbox"/> 120	DN65	DN80	14 - 17,8 m ³ /h	315 - 400 kW		<input type="checkbox"/> Galvanised sheet steel jacket
<input type="checkbox"/> 160	DN80	DN100	19,3 - 31,8 m ³ /h	435 - 720 kW		<input type="checkbox"/> polystyrene EPS 25 mm (DIN 4102-B2) - HV60 only
<input type="checkbox"/> 200	DN100	DN125	32,5 - 42 m ³ /h	735 - 950 kW		<input type="checkbox"/> polystyrene EPS 35 mm (DIN 4102-B2) - HV80 only
<input type="checkbox"/> 250	DN125	DN150	49 - 71,8 m ³ /h	1110 - 1625 kW		<input type="checkbox"/> rock wool (MW-EN 13162-T6-WL(P)-AF30-SD20-CP5)
<input type="checkbox"/> 300	DN150	DN200	71,8 - 118 m ³ /h	1625 - 2675 kW		<input type="checkbox"/> 50 mm <input type="checkbox"/> 100 mm
<input type="checkbox"/> 350	DN200	DN250	121,5 - 138 m ³ /h	2750 - 3130 kW		<input type="checkbox"/> vapour barrier FEF 19 mm (EN 14304)
<input type="checkbox"/> 400	DN250	DN300	181,5 m ³ /h	4110 kW		<input type="checkbox"/> _____
<input type="checkbox"/> 450	DN300	DN350	251,8 m ³ /h	5700 kW		<input type="checkbox"/> Wall brackets
<input type="checkbox"/> 500	DN350	DN400	264,3 m ³ /h	5980 kW		A = <input type="text"/> mm (For HV 80-120, A = 160 or 220 mm)

The number of maximum connection sizes is limited to 2.

- Galvanised sheet steel jacket
- polystyrene EPS 25 mm (DIN 4102-B2) - HV60 only
- polystyrene EPS 35 mm (DIN 4102-B2) - HV80 only
- rock wool (MW-EN 13162-T6-WL(P)-AF30-SD20-CP5)
- 50 mm 100 mm
- vapour barrier FEF 19 mm (EN 14304)
- _____
- Wall brackets
- A = mm
(For HV 80-120, A = 160 or 220 mm)
- Stands
- H = mm



REMARKS: